



Grade 1

WORLD SCIENCE CHAMPIONSHIP

2024

Total Questions: 35

Total Marks: 35

Time: 1hr

Set: B

General Instructions for the Examinee

Opening Instructions:

Welcome to the world Maths Championship. Before we commence, please pay close attention to the following instructions:

- Electronic devices such as cell phones and MP3 players must be turned off.
- Do not share or exchange materials with other students.
- Unauthorized aids are strictly prohibited and its use can lead to disqualification.
- Calculators are not allowed for Grade 1-5
- Scientific Calculators are allowed for Grade 6-8
- Refrain from consulting notes, textbooks, teachers, or other students regarding the exam materials.

Instructions for Filling Student Details in OMR Sheet and Signing the Attendance sheet:

There will be a ten-minute break for students to fill in the details

Filling Student Details:

- Please refer to the instructions at the back of the OMR sheet for proper completion your details.

Signing Attendance sheet:

- Ensure you have signed the attendance sheet and OMR sheet provided.
- Invigilator should also sign your OMR sheet in the space provided.

marks - Total 35 marks.

- Grades 5 to 8: 50 questions of 1 mark each, there is no negative marking and if you skip/leave a question no marks will be given but also no marks will be deducted as -ve marks - Total 50 marks.

- Darken the circle corresponding to your chosen answer on the OMR sheet.
- Ensure you darken circles completely. Questions that do not have the darker circle are considered unanswered and will be counted wrong.
- You have 60 minutes to complete the exam.
- Note that you can choose only one answer – if you mark another response, that question will be disqualified.
- If you finish before the time is up, raise your hand, and the invigilator will collect your sheet for scoring. When you are finished and your OMR Sheet is collected, please leave the room quietly.

Instruction for Taking Examination:

- The question paper has been sealed by a reverse jacket. You have to cut on the right side to open the paper at the time of commencement of the examination. Check whether all the pages of the question paper are intact.
- This Examination is multiple-choice based, with either 4 options, 3 options or 2 options for each question.
- Each grade level has specific question formats and durations:
 - Grades 1 to 4: 35 questions of 1 mark each, there is no negative marking and if you skip/leave a question no marks will be given but also no marks will be deducted as -ve

Thank you for your attention, and best of luck with the World Maths Championship!

Question: 1 of 35

QID: 129

Marks : 1

Which object is shaped like a triangle?

 A. B.**Question: 9 of 35**

QID: 268

Marks : 1

Is a plate a solid or a liquid?

 A. Solid B. Liquid**Question: 2 of 35**

QID: 130

Marks : 1

Which object is shaped like a cylinder?

 A. B.**Question: 10 of 35**

QID: 277

Marks : 1

Anna wants to make ice cubes. First, she fills an ice cube tray with water. What should Anna do now?

 A. Put the tray in the freezer B. put the tray on the counter**Question: 3 of 35**

QID: 167

Marks : 1

Texture is how something feels when you touch it. What animal feels soft?

 A. B.**Question: 11 of 35**

QID: 278

Marks : 1

The water turned into ice cubes in the freezer. Next, Anna puts some ice cubes in a glass. She puts the glass on the counter. Will the ice cubes turn back into water?

 A. yes B. no**Question: 12 of 35**

QID: 279

Marks : 1

Leo wants to make a cake. First, he mixes ingredients to make batter. Next, he pours the batter into a baking dish. Leo is ready to bake the cake. What should Leo do now?

 A. put the baking dish in the freezer B. put the baking dish in a hot oven**Question: 4 of 35**

QID: 170

Marks : 1

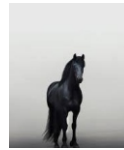
Texture is how something feels when you touch it. What animal feels rough?

 A. B.**Question: 13 of 35**

QID: 290

Marks : 1

Light helps you see. Choose the picture with more light.

 A. B.**Question: 5 of 35**

QID: 197

Marks : 1

Which truck is shorter?

 A. B.**Question: 14 of 35**

QID: 291

Marks : 1

Light helps you see. Choose the picture with more light.

 A. B.**Question: 6 of 35**

QID: 198

Marks : 1

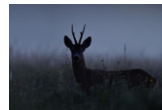
Which sword is longer?

 A. B.**Question: 15 of 35**

QID: 292

Marks : 1

Light helps you see. Choose the picture with more light.

 A. B.**Question: 7 of 35**

QID: 266

Marks : 1

Is a knife a solid or a liquid?

 A. Solid B. Liquid**Question: 8 of 35**

QID: 267

Marks : 1

Is a fork solid or a liquid?

 A. Solid B. Liquid

Question: 16 of 35

QID: 360

Marks : 1

Forces make things move. What kind of force is shown?



- A. push B. pull

Question: 17 of 35

QID: 360

Marks : 1

Forces make things move. What kind of force is shown?



- A. push B. pull

Question: 18 of 35

QID: 364

Marks : 1

Gabby, Lucas, and Kate are going sledding. Gabby and Lucas are sitting on the sled. Kate pulls the sled. What direction will the sled move?

- A. towards Kate B. away from Kate

Question: 19 of 35

QID: 372

Marks : 1

The great white shark eats fish. What need does this meet?

- A. Space B. Water
 C. food

Question: 20 of 35

QID: 373

Marks : 1

Sarah eats an apple. What need does this meet?

- A. air B. Water
 C. food

Question: 21 of 35

QID: 374

Marks : 1

The owls live inside a hole in a tree. What need does this Meet?

- A. air B. shelter
 C. water

Question: 22 of 35

QID: 364

Marks : 1

Plants need light, air, water, nutrients, and space. Ken's tomato plants are too big for their pots! He moves them into the ground. Which need does this meet?

- A. light B. water
 C. space

Question: 23 of 35

QID: 365

Marks : 1

Plants need light, air, water, nutrients, and space. Vegetable plants grow under bright light. Which need does this meet?

- A. light B. water
 C. space

Question: 24 of 35

QID: 366

Marks : 1

Plants need light, air, water, nutrients, and space. Grass clippings are left on this lawn. The clippings will break down and help the young grass grow. Which need does this meet?



- A. nutrients B. air
 C. light

Question: 25 of 35

QID: 577

Marks : 1

Pick one thing that you can see in this picture.



- A. elephant B. spider

Question: 26 of 35

QID: 492

Marks : 1

We live on a planet called Earth. Earth is covered with land and water. This is a model of Earth. Most of the model is blue. What does the blue part show?



- A. Water B. land

Question: 27 of 35

QID: 493

Marks : 1

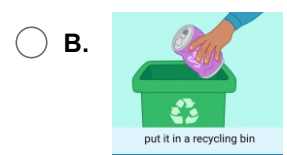
A river is water that moves in a line across the land. Rivers are long. They carry water from one place to another. Select the river.

**Question: 28 of 35**

QID: 515

Marks : 1

Ava finishes a can of soda. she wants to recycle the can. What should Ava do?



Question: 29 of 35

QID: 516

Marks : 1

Bob is moving. He has a couch he needs to get rid of. He wants the couch to be reused. What should Bob do?

 A.

give the couch to a neighbor

 B.

take the couch to the dump

Question: 34 of 35

QID: 737

Marks : 1

Jack is building a race car track! He wants the race car to reach the finish line. Jack draws a picture of his idea. This drawing is called a design. What does Jack want the race car to do?

 A.

go down the ramp, then go straight to the finish line.

 B.

go up the ramp, then go straight to the finish line.

Question: 30 of 35

QID: 380

Marks : 1

Describe the weather.

 A. sunny B. windy C. rainy**Question: 31 of 35**

QID: 581

Marks : 1

Describe the weather.

 A. sunny B. windy C. rainy**Question: 32 of 35**

QID: 590

Marks : 1

Jen is camping on the beach with her family. She wakes up early and walks to the water. The sky is beautiful! What does she see?

 A. sun B. moon C. trees**Question: 33 of 35**

QID: 591

Marks : 1

On a Saturday night in winter, Ben looks out his bedroom window. He wonders about what he sees in the night sky. Choose the correct option.

 A. moon B. sun**Question: 35 of 35**

QID: 738

Marks : 1

Jack wants to test his race track design. What should he do first?

 A.

build the track

 B.

push the race car

 C.

see if the race car reaches the finish line

--- END OF QUESTION PAPER ---